

Quality ID #1 (NQF 0059): Diabetes: Hemoglobin A1c (HbA1c) Poor Control (>9%)

– National Quality Strategy Domain: Effective Clinical Care

– Meaningful Measure Area: Management of Chronic Conditions

2020 COLLECTION TYPE:

MEDICARE PART B CLAIMS

MEASURE TYPE:

Intermediate Outcome – High Priority

DESCRIPTION:

Percentage of patients 18-75 years of age with diabetes who had hemoglobin A1c > 9.0% during the measurement period

INSTRUCTIONS:

This measure is to be submitted a minimum of **once per performance period** for patients with diabetes seen during the performance period. The most recent quality-data code submitted will be used for performance calculation. This measure may be submitted by Merit-based Incentive Payment System (MIPS) eligible clinicians who perform the quality actions described in the measure based on the services provided and the measure-specific denominator coding.

Measure Submission Type:

Measure data may be submitted by individual MIPS eligible clinicians using Medicare Part B claims. The listed denominator criteria are used to identify the intended patient population. The numerator quality-data codes included in this specification are used to submit the quality actions allowed by the measure on the claim form(s). All measure-specific coding should be submitted on the claim(s) representing the denominator eligible encounter and selected numerator option.

DENOMINATOR:

Patients 18 - 75 years of age with diabetes with a visit during the measurement period

DENOMINATOR NOTE: *Signifies that this CPT Category I code is a non-covered service under the Physician Fee Schedule (PFS). These non-covered services will not be counted in the denominator population for Medicare Part B claims measures

Denominator Criteria (Eligible Cases):

Patients 18 through 75 years of age on date of encounter

AND

Diagnosis for diabetes (ICD-10-CM): E10.10, E10.11, E10.21, E10.22, E10.29, E10.311, E10.319, E10.3211, E10.3212, E10.3213, E10.3219, E10.3291, E10.3292, E10.3293, E10.3299, E10.3311, E10.3312, E10.3313, E10.3319, E10.3391, E10.3392, E10.3393, E10.3399, E10.3411, E10.3412, E10.3413, E10.3419, E10.3491, E10.3492, E10.3493, E10.3499, E10.3511, E10.3512, E10.3513, E10.3519, E10.3521, E10.3522, E10.3523, E10.3529, E10.3531, E10.3532, E10.3533, E10.3539, E10.3541, E10.3542, E10.3543, E10.3549, E10.3551, E10.3552, E10.3553, E10.3559, E10.3591, E10.3592, E10.3593, E10.3599, E10.36, E10.37X1, E10.37X2, E10.37X3, E10.37X9, E10.39, E10.40, E10.41, E10.42, E10.43, E10.44, E10.49, E10.51, E10.52, E10.59, E10.610, E10.618, E10.620, E10.621, E10.622, E10.628, E10.630, E10.638, E10.641, E10.649, E10.65, E10.69, E10.8, E10.9, E11.00, E11.01, E11.21, E11.22, E11.29, E11.311, E11.319, E11.3211, E11.3212, E11.3213, E11.3219, E11.3291, E11.3292, E11.3293, E11.3299, E11.3311, E11.3312, E11.3313, E11.3319, E11.3391, E11.3392, E11.3393, E11.3399, E11.3411, E11.3412, E11.3413, E11.3419, E11.3491, E11.3492, E11.3493, E11.3499, E11.3511, E11.3512, E11.3513, E11.3519, E11.3521, E11.3522, E11.3523, E11.3529, E11.3531, E11.3532, E11.3533, E11.3539, E11.3541, E11.3542, E11.3543, E11.3549, E11.3551,

E11.3552, E11.3553, E11.3559, E11.3591, E11.3592, E11.3593, E11.3599, E11.36, E11.37X1, E11.37X2, E11.37X3, E11.37X9, E11.39, E11.40, E11.41, E11.42, E11.43, E11.44, E11.49, E11.51, E11.52, E11.59, E11.610, E11.618, E11.620, E11.621, E11.622, E11.628, E11.630, E11.638, E11.641, E11.649, E11.65, E11.69, E11.8, E11.9, E13.00, E13.01, E13.10, E13.11, E13.21, E13.22, E13.29, E13.311, E13.319, E13.3211, E13.3212, E13.3213, E13.3219, E13.3291, E13.3292, E13.3293, E13.3299, E13.3311, E13.3312, E13.3313, E13.3319, E13.3391, E13.3392, E13.3393, E13.3399, E13.3411, E13.3412, E13.3413, E13.3419, E13.3491, E13.3492, E13.3493, E13.3499, E13.3511, E13.3512, E13.3513, E13.3519, E13.3521, E13.3522, E13.3523, E13.3529, E13.3531, E13.3532, E13.3533, E13.3539, E13.3541, E13.3542, E13.3543, E13.3549, E13.3551, E13.3552, E13.3553, E13.3559, E13.3591, E13.3592, E13.3593, E13.3599, E13.36, E13.37X1, E13.37X2, E13.37X3, E13.37X9, E13.39, E13.40, E13.41, E13.42, E13.43, E13.44, E13.49, E13.51, E13.52, E13.59, E13.610, E13.618, E13.620, E13.621, E13.622, E13.628, E13.630, E13.638, E13.641, E13.649, E13.65, E13.69, E13.8, E13.9, O24.011, O24.012, O24.013, O24.019, O24.02, O24.03, O24.111, O24.112, O24.113, O24.119, O24.12, O24.13, O24.311, O24.312, O24.313, O24.319, O24.32, O24.33, O24.811, O24.812, O24.813, O24.819, O24.82, O24.83

AND

Patient encounter during performance period (CPT or HCPCS): 99201, 99202, 99203, 99204, 99205, 99212, 99213, 99214, 99215, 99241*, 99242*, 99243*, 99244*, 99245*, 99341, 99342, 99343, 99344, 99345, 99347, 99348, 99349, 99350, 99385*, 99386*, 99387*, 99395*, 99396*, 99397*, G0438, G0439

NUMERATOR:

Patients whose most recent HbA1c level (performed during the measurement period) is > 9.0%

Numerator Instruction:

INVERSE MEASURE - A lower calculated performance rate for this measure indicates better clinical care or control. The "Performance Not Met" numerator option for this measure is the representation of the better clinical quality or control. Submitting that numerator option will produce a performance rate that trends closer to 0%, as quality increases. For inverse measures, a rate of 100% means all of the denominator eligible patients did not receive the appropriate care or were not in proper control. Patient is numerator compliant if most recent HbA1c level >9% or is missing a result or if an HbA1c test was not done during the measurement period. Ranges and thresholds do not meet criteria for this indicator. A distinct numeric result is required for numerator compliance.

Numerator Quality-Data Coding Options:

Patient receiving Hospice Services, Patient Not Eligible:

Denominator Exclusion: G9687:

Hospice services provided to patient any time during the measurement period

OR

G2081:

Patients age 66 and older in Institutional Special Needs Plans (SNP) or residing in long-term care with a POS code 32, 33, 34, 54 or 56 for more than 90 days during the measurement period

OR

G2090:

Patients 66 years of age and older with at least one claim/encounter for frailty during the measurement period AND a dispensed medication for dementia during the measurement period or the year prior to the measurement period

OR

G2091:

Patients 66 years of age and older with at least one claim/encounter for frailty during the measurement period AND either one acute inpatient encounter with a

diagnosis of advanced illness or two outpatient, observation, ED or non-acute inpatient encounters on different dates of service with an advanced illness diagnosis during the measurement period or the year prior to the measurement period

Table: Dementia Exclusion Medications

Description	Prescription
Cholinesterase inhibitors	Donepezil Rivastigimine Galantamine
Miscellaneous central nervous system agents	Memantine

OR

Most Recent Hemoglobin A1c Level > 9.0%

Performance Met: CPT II 3046F:

Most recent hemoglobin A1c level > 9.0%

OR

Hemoglobin A1c not Performed, Reason not Otherwise Specified

Append a submission modifier (8P) to CPT Category II code 3046F to submit circumstances when the action described in the numerator is not performed and the reason is not otherwise specified.

Performance Met: 3046F with 8P:

Hemoglobin A1c level was not performed during the measurement period (12 months)

OR

Most Recent Hemoglobin A1c Level ≤ 9.0%

Performance Not Met: CPT II 3044F:

Most recent hemoglobin A1c (HbA1c) level < 7.0%

OR

Performance Not Met: G2089:

Most recent hemoglobin A1c (HbA1c) level 7.0 to 9.0%

RATIONALE:

As the seventh leading cause of death in the U.S., diabetes kills approximately 79,500 people a year and affects more than 30 million Americans (9.4 percent of the U.S. population) (Centers for Disease Control and Prevention [CDC], 2017a, 2017b). Diabetes is a long-lasting disease marked by high blood glucose levels, resulting from the body's inability to produce or use insulin properly (CDC, 2017c). People with diabetes are at increased risk of serious health complications including vision loss, heart disease, stroke, kidney failure, amputation of toes, feet or legs, and premature death (CDC, 2016).

In 2017, diabetes cost the U.S. an estimated \$327 billion: \$237 billion in direct medical costs and \$90 billion in reduced productivity. This is a 34 percent increase from the estimated \$245 billion spent on diabetes in 2012 (American Diabetes Association, 2018a).

Controlling A1c blood levels help reduce the risk of microvascular complications (eye, kidney and nerve diseases) (CDC, 2014).

CLINICAL RECOMMENDATION STATEMENTS:

American Diabetes Association (2018):

A reasonable A1C goal for many nonpregnant adults is <7%. (Level of evidence: A)

Providers might reasonably suggest more stringent A1C goals (such as <6.5%) for selected individual patients if this can be achieved without significant hypoglycemia or other adverse effects of treatment. Appropriate patients might include those with short duration of diabetes, type 2 diabetes treated with lifestyle or metformin only, long life expectancy, or no significant cardiovascular disease (CVD). (Level of evidence: C)

Less stringent A1C goals (such as <8%) may be appropriate for patients with a history of severe hypoglycemia, limited life expectancy, advanced microvascular or macrovascular complications, extensive comorbid conditions, or long-standing diabetes in whom the general goal is difficult to attain despite diabetes self-management education, appropriate glucose monitoring, and effective doses of multiple glucose-lowering agents including insulin. (Level of evidence: B)

COPYRIGHT:

Physician Performance Measure (Measures) and related data specifications were developed by the National Committee for Quality Assurance (NCQA). These performance Measures are not clinical guidelines and do not establish a standard of medical care, and have not been tested for all potential applications. NCQA makes no representations, warranties or endorsements about the quality of any organization or clinician who uses or reports performance measures. NCQA has no liability to anyone who relies on measures and specifications or data reflective of performance under such measures and specifications.

The Measures are copyrighted but can be reproduced and distributed, without modification, for noncommercial purposes (eg, use by healthcare providers in connection with their practices). Commercial use is defined as the sale, licensing, or distribution of the Measures for commercial gain, or incorporation of the Measures into a product or service that is sold, licensed or distributed for commercial gain. All commercial uses or requests for alteration of the measures and specifications must be approved by NCQA and are subject to a license at the discretion of NCQA. NCQA is not responsible for any use of the Measures. © 2019 NCQA. All Rights Reserved.

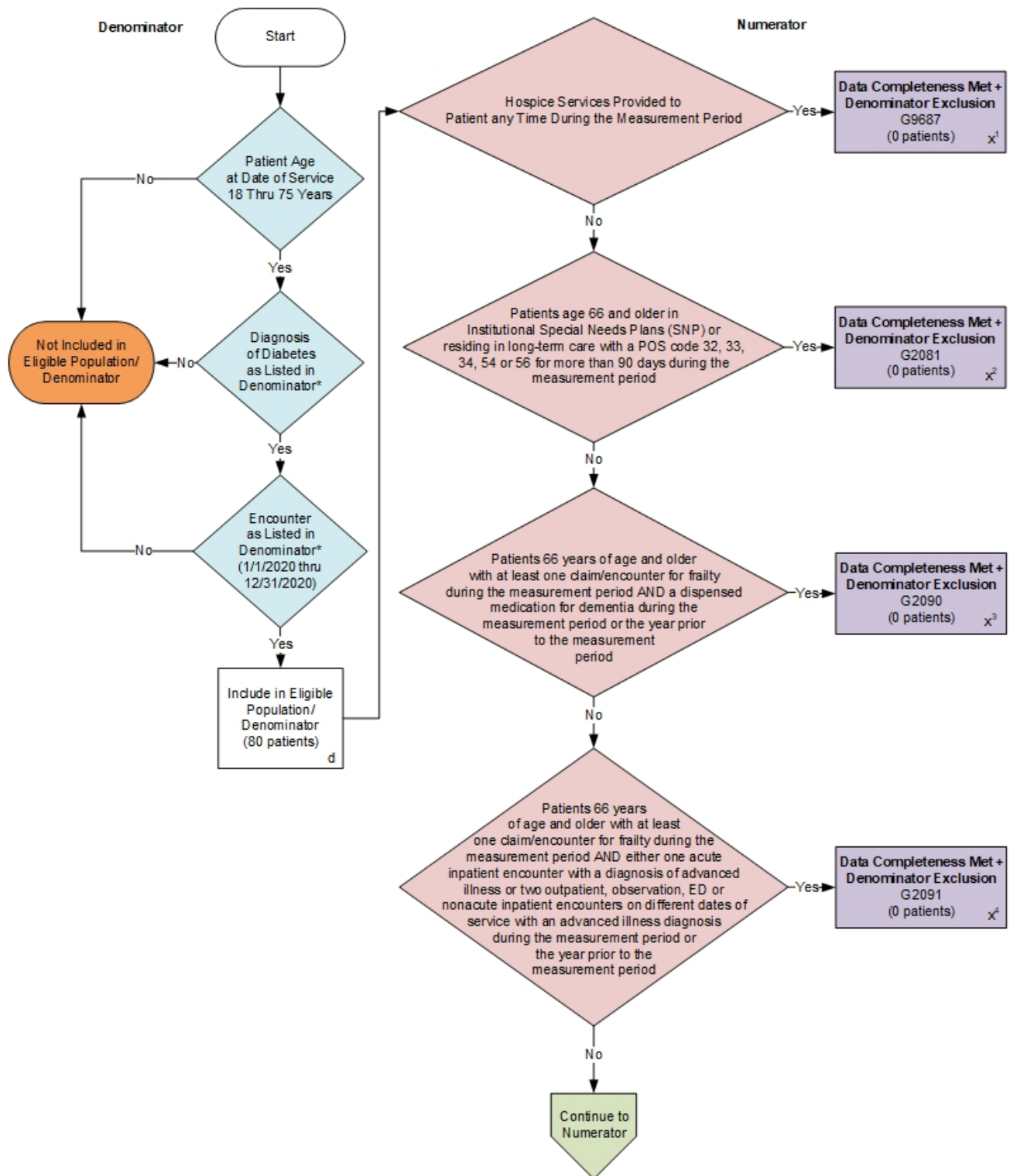
THE MEASURES AND SPECIFICATIONS ARE PROVIDED "AS IS" WITHOUT WARRANTY OF ANY KIND.

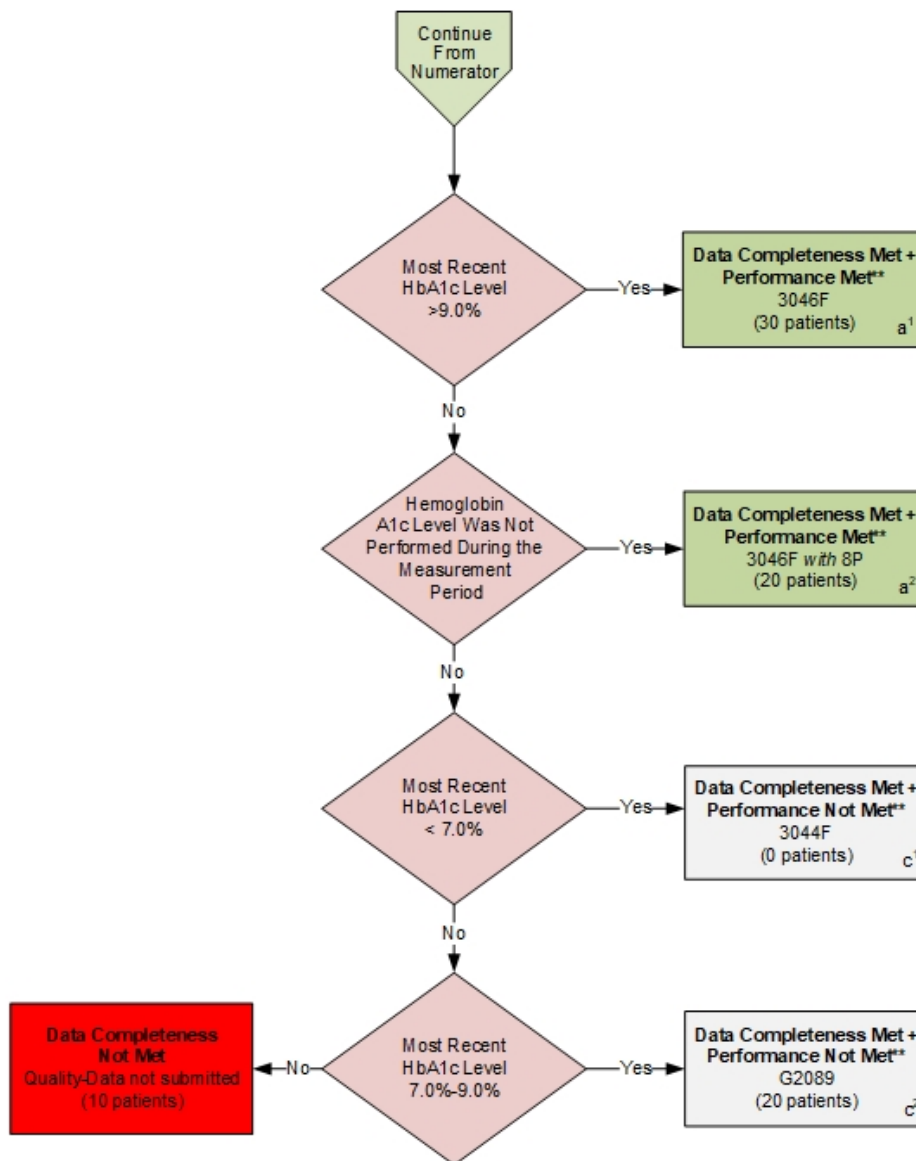
Limited proprietary coding is contained in the Measure specifications for user convenience. Users of proprietary code sets should obtain all necessary licenses from the owners of the code sets. NCQA disclaims all liability for use or accuracy of any CPT or other codes contained in the specifications.

CPT® contained in the Measure specifications is copyright 2004-2019 American Medical Association. LOINC® copyright 2004-2019 Regenstrief Institute, Inc. This material contains SNOMED Clinical Terms® (SNOMED CT®) copyright 2004-2019 International Health Terminology Standards Development Organisation. ICD-10 is copyright 2019 World Health Organization. All Rights Reserved.

**2020 Medicare Part B Claims Flow for Quality ID #1 NQF #0059:
Diabetes: Hemoglobin A1c (HbA1c) Poor Control (>9%)**

Disclaimer: Refer to the measure specification for specific coding and instructions to submit this measure.





SAMPLE CALCULATIONS:

Data Completeness=

$$\frac{\text{Denominator Exclusion } (x^1+x^2+x^3+x^4=0 \text{ patients}) + \text{Performance Met } (a^1+a^2=50 \text{ patients}) + \text{Performance Not Met } (c^1+c^2=20 \text{ patients})}{\text{Eligible Population / Denominator } (d=80 \text{ patients})} = \frac{70 \text{ patients}}{80 \text{ patients}} = 87.50\%$$

Performance Rate**=

$$\frac{\text{Performance Met } (a^1+a^2=50 \text{ patients})}{\text{Data Completeness Numerator } (70 \text{ patients}) - \text{Denominator Exclusion } (x=0 \text{ patients})} = \frac{50 \text{ patients}}{70 \text{ patients}} = 71.43\%$$

*See the posted measure specification for specific coding and instructions to submit this measure.

**A lower calculated performance rate for this measure indicates better clinical care or control.

NOTE: Submission Frequency: Patient-Intermediate

CPT only copyright 2019 American Medical Association. All rights reserved.
The measure diagrams were developed by CMS as a supplemental resource to be used in conjunction with the measure specifications. They should not be used alone or as a substitution for the measure specification.

v4

**2020 Medicare Part B Claims Flow Narrative for Quality ID #1 NQF #0059:
Diabetes: Hemoglobin A1c (HbA1c) Poor Control (>9%)**

Disclaimer: Refer to the measure specification for specific coding and instructions to submit this measure.

1. Start with Denominator
2. Check Patient Age:
 - a. If Patient Age is equal to 18 thru 75 years on Date of Service equals No during the measurement period, do not include in Eligible Population. Stop Processing.
 - b. If Patient Age is equal to 18 thru 75 years on Date of Service equals Yes during the measurement period, proceed to check Patient Diagnosis.
3. Check Patient Diagnosis:
 - a. If Diagnosis of Diabetes as Listed in the Denominator equals No, do not include in Eligible Population. Stop Processing.
 - b. If Diagnosis of Diabetes as Listed in the Denominator equals Yes, proceed to check Encounter Performed.
4. Check Encounter Performed:
 - a. If Encounter as Listed in the Denominator equals No, do not include in Eligible Population. Stop Processing.
 - b. If Encounter as Listed in the Denominator equals Yes, include in Eligible Population.
5. Denominator Population
 - a. Denominator Population is all Eligible Patients in the Denominator. Denominator is represented as Denominator in the Sample Calculation listed at the end of this document. Letter d equals 80 patients in the Sample Calculation.
6. Start Numerator
7. Check Hospice Services Provided to Patient Any Time During the Measurement Period:
 - a. If Eligible Hospice Services Provided to Patient Any Time During the Measurement Period equals Yes, include in Data Completeness Met and Denominator Exclusion
 - b. Data Completeness Met and Denominator Exclusion letter is represented as Data Completeness and Performance Rate in the Sample Calculation listed at the end of this document. Letter x¹ equals 0 patients in the Sample Calculation.
 - c. If Eligible Hospice Services Provided to Patient Any Time During the Measurement Period equals No, proceed to check age and Institutional Special Needs Plans (SNP) or residing in long-term care with a POS code 32, 33, 34, 54 or 56 for more than 90 days during the measurement period.

Check patients age and Institutional Special Needs Plans (SNP) or residing in long-term care with a POS code 32, 33, 34, 54 or 56 for more than 90 days during the measurement period

- d. If patient age 66 and older and Institutional Special Needs Plans or residing in long-term care with a POS code 32, 33, 34, 54 or 56 for more than 90 days during the measurement period equals Yes, include in Data Completeness Met and Denominator Exclusion
 - e. Data Completeness Met and Denominator Exclusion letter is represented as Data Completeness and Performance Rate in the Sample Calculation listed at the end of this document. Letter x² equals 0 patients in the Sample Calculation.
 - f. If patient age 66 and older and Institution Special Needs Plans or residing in long-term care with a POS code 32, 33, 34, 54 or 56 for more than 90 days during the measurement period equals No, proceed to check patients age 66 years of age and older with at least one claim/encounter for frailty during the measurement period AND a dispensed medication for dementia during the measurement period or the year prior to the measurement period.
8. Check patients age 66 years of age and older with at least one claim/encounter for frailty during the measurement period AND a dispensed medication for dementia during the measurement period or the year prior to the measurement period
- a. If patient age 66 and older with at least one claim/encounter for frailty during the measurement period AND a dispensed medication for dementia during the measurement period of the year prior to the measurement period equals Yes, include in Data Completeness Met and Denominator Exclusion.
 - b. Data Completeness Met and Denominator Exclusion letter is represented as Data Completeness and Performance Rate in the Sample Calculation listed at the end of this document. Letter x³ equals 0 patients in the Sample Calculation.
 - c. If patient age 66 and older with at least one claim/encounter for frailty during the measurement period AND dispersed medication for dementia during the measurement period of the year prior to the measurement period equals No, proceed to check patients age 66 years of age and older with at least one claim/encounter for frailty during the measurement period AND either one acute inpatient encounter with a diagnosis of advanced illness or two outpatient, observation, ED or nonacute inpatient encounters on different dates of service with an advanced illness diagnosis during the measurement period or the year prior to the measurement period.
9. Check patients age 66 years of age and older with at least one claim/encounter for frailty during the measurement period AND either one acute inpatient encounter with a diagnosis of advanced illness or two outpatient, observation, ED or nonacute inpatient encounters on different dates of service with an advanced illness diagnosis during the measurement period or the year prior to the measurement period
- a. If patient age 66 years of age and older with at least one claim/encounter for frailty during the measurement period AND either one acute inpatient encounter with diagnosis of advanced illness or two outpatient, observation, ED or nonacute inpatient encounters on different dates of service with an advanced illness diagnosis during the measurement period or the year prior to the measurement period equals Yes, include in Data Completeness Met and Denominator Exclusion
 - b. Data Completeness Met and Denominator Exclusion letter is represented as Data Completeness and Performance Rate in the Sample Calculation listed at the end of this document. Letter x⁴ equals 0 patients in the Sample Calculation.

- c. If patient age 66 years of age and older with at least one claim/encounter for frailty during the measurement period AND either one acute inpatient encounter with diagnosis of advanced illness or two outpatient, observation, ED or nonacute inpatient encounters on different dates of service with an advanced illness diagnosis during the measurement period or the year prior to the measurement period equals No, proceed to Check Most Recent HbA1c greater than 9.0 percent
10. Check Most Recent HbA1c greater than 9.0 percent:
- a. If Most Recent HbA1c is greater than 9.0 percent equals Yes, include in Data Completeness Met and Performance Met.
 - b. Data Completeness Met and Performance Met letter is represented as Data Completeness and Performance Rate in the Sample Calculation listed at the end of this document. Letter a¹ equals 30 patients in the Sample Calculation.
 - c. If Most Recent HbA1c is greater than 9.0 percent equals No, proceed to check Hemoglobin A1c Level Was Not Performed During the Measurement Period.
11. Check Hemoglobin A1c Level Was Not Performed During the Measurement Period:
- a. If Hemoglobin A1c Level Was Not Performed During the Measurement Period equals Yes, include in Data Completeness Met and Performance Met.
 - b. Data Completeness Met and Performance Met letter is represented as Data Completeness and Performance Rate in the Sample Calculation listed at the end of this document. Letter a² equals 20 patients in the Sample Calculation.
 - c. If Hemoglobin A1c Level Was Not Performed During the Measurement Period equals No, proceed to check Most Recent HbA1c Level is Less than 7.0 percent.
12. Check Most Recent HbA1c Level is less than 7.0 percent:
- a. If Most Recent HbA1c is less than 7.0 percent equals Yes, include in the Data Completeness Met and Performance Not Met.
 - b. Data Completeness Met and Performance Not Met letter is represented as Data Completeness in the Sample Calculation listed at the end of this document. Letter c¹ equals 0 patients in the Sample Calculation.
 - c. If Most Recent HbA1c is less than 7.0 percent equals No, proceed to check Most Recent HbA1c Level is 7.0 percent through 9.0 percent.
13. Check Most Recent HbA1c Level is 7.0 percent through 9.0 percent:
- a. If Most Recent HbA1c Level is 7.0 percent through 9.0 percent equals Yes, include in Data Completeness Met and Performance Not Met.
 - b. Data Completeness Met and Performance Not Met letter is represented as Data Completeness in the Sample Calculation listed at the end of this document. Letter c² equals 20 patients in the Sample Calculation.

- c. If Most Recent HbA1c is 7.0 percent through 9.0 percent equals No, proceed to check Data Completeness Not Met.

14. Check Data Completeness Not Met:

- a. If Data Completeness Not Met equals No, the Quality Data Code was not submitted. 10 patients have been subtracted from the Data Completeness Numerator in the Sample Calculation.

SAMPLE CALCULATIONS:

Data Completeness=

$$\frac{\text{Denominator Exclusion } (x^1+x^2+x^3+x^4=0 \text{ patients}) + \text{Performance Met } (a^1+a^2=50 \text{ patients}) + \text{Performance Not Met } (c^1+c^2=20 \text{ patients})}{\text{Eligible Population / Denominator } (d=80 \text{ patients})} = \frac{70 \text{ patients}}{80 \text{ patients}} = 87.50\%$$

Performance Rate=**

$$\frac{\text{Performance Met } (a^1+a^2=50 \text{ patients})}{\text{Data Completeness Numerator } (70 \text{ patients}) - \text{Denominator Exclusion } (x=0 \text{ patients})} = \frac{50 \text{ patients}}{70 \text{ patients}} = 71.43\%$$